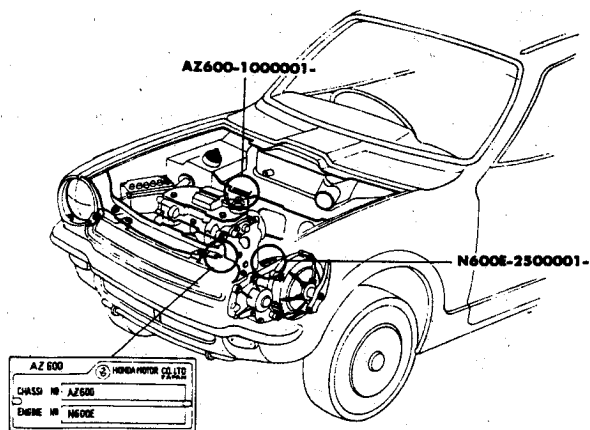


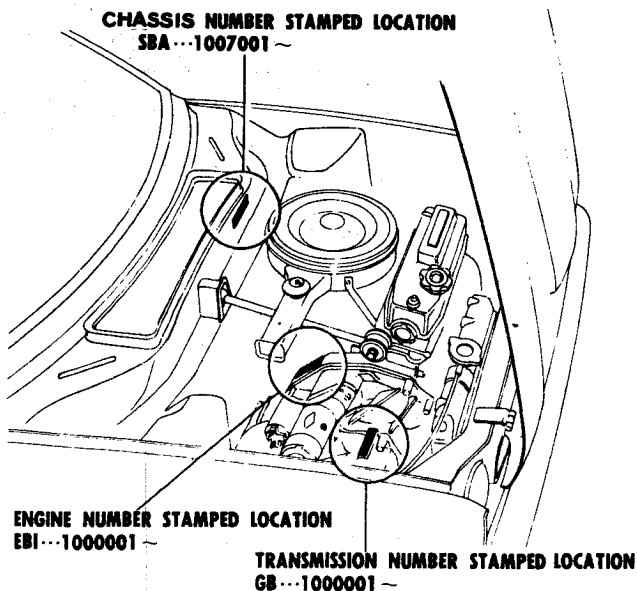
IDENTIFICATION PLATES – 600 SEDAN



IDENTIFICATION PLATES – 600 COUPE

MODEL IDENTIFICATION

MODEL	YEAR	BODY TYPE	FROM CHASSIS	
CIVIC	1973	2 Door (Std)	SBA-1007001	
		2 Door (Auto)	SBB-1007001	
		3 Door (Std)	SBC-1007001	
	1974	3 Door (Auto)	SBD-1007001	
		2 Door (Std)	SBA-2100001	
		2 Door (Auto)	SBB-2100001	
	1975	3 Door (Std)	SBC-2100001	
		3 Door (Auto)	SBD-2100001	
		2 Door (Std)	SBA-3300001	
	1976	2 Door (Auto)	SBB-3300001	
		3 Door (Std)	SBC-3300001	
		3 Door (Auto)	SBD-3300001	
	1977	2 Door (Std)	SBA-4000001	
		2 Door (Auto)	SBB-4000001	
		3 Door (Std)	SBC-4000001	
	CIVIC-CVCC	1975	3 Door (Auto)	SBD-4000001
			2 Door (Std)	SBA-5000001
			3 Door (Std)	SBC-5000001
1976		3 Door (Auto)	SBD-5000001	
		2 Door (Auto)	SBB-5000001	
		2 Door (Std)	SBA-1000001	
1977		2 Door (Auto)	SBB-1000001	
		3 Dr. (Std 4-Speed)	SGC-1000001	
		3 Dr. (Std 5-Speed)	SGE-1000001	
ACCORD		1976	3 Door (Auto)	SGD-1000001
			Station Wagon	WBA-1000001
			2 Door (Std)	SGA-2000001
		1977	2 Door (Auto)	SBB-2000001
			3 Dr. (Std 4-Speed)	SGC-2000001
			3 Dr. (Std 5-Speed)	SGE-2000001
		1978	3 Door (Auto)	SGD-2000001
			Sta Wgn (Std)	WBA-2000001
			Sta Wgn (Auto)	WBB-2000001
	1979	2 Door (Std)	SGA-3000001	
		3 Dr. (Std 4-Speed)	SGC-3000001	
		3 Dr. (Std 5-Speed)	SGE-3000001	
	1980	3 Door (Auto)	SGD-3000001	
		Sta Wgn (Std)	WBA-3000001	
		Sta Wgn (Auto)	WBB-3000001	
	1981	2 Door (Std)	SJE-1000001	
		2 Door (Auto)	SJD-1000001	
		2 Door (Std)	SJE-2000001	
1982	2 Door (Auto)	SJD-2000001		



IDENTIFICATION PLATES – CIVIC – CVCC – ACCORD

BUMPERS-FRAME-GRILLE-HOOD-FENDERS-ELECTRICAL

BUMPERS		
FRONT BUMPER (FIG A)		
Assy, R&R 5, Overhaul 1.1		
1 Face bar	42.53	.7
2 Guard rail, R-L	16.46	.2
3 bracket	2.53	
4 Mounting bracket, R-L	2.99	
5 License plate bracket	2.53	.2
REAR BUMPER (FIG A)		
Assy, R&R 5, Overhaul 1.0		
6 Face bar, exc	49.75	.7
-from 1020209	42.53	.7
7 Guard, R-L exc	10.36	.5
-from 1020209	10.36	.5
8 Mounting brkt, R-L exc	4.53	
-from 1020209	4.53	
9 Gravel defl, from 1020209 (p.6)	14.17	.7

FRAME		
FIGS B & F		
10 Sub frame, front exc	70.38	3.4
-from 1020209	70.38	3.4
11 mounting cushion (8)	1.54	
11A bracket, front R-L	4.53	

GRILLE & FRONT PANEL		
FIGS C & F		
12 Grille exc	21.92	.8
-from 1033852	21.92	.8
13 emblem	7.46	.3
14 screen	9.04	
15 protector tube	.24	
16 Mudflap, R-L	4.42	.2
Front panel-		
17 assembly exc	49.75	
-from 1033852	49.75	
18 lower, exc	18.76	# 2.0
-from 1033852	20.32	# 2.0
19 side panel, right	13.20	§ 1.5
20 -left	13.20	§ 1.5
21 tie bar, upper	13.20	# 2.0
22 -stiffener	2.11	# 2.0

After bumper, grille & lamps are removed.
§ After lower section & fender are removed.

COOLING		
FIG D		
23 Fan	6.86	.9
24 bearing	3.28	
25 spacer	.66	
26 housing, exc	31.17	.7
27 -from 1500001	31.17	
28 cover exc	2.31	
-from 1500001	5.70	
29 pulley, fan	3.39	.8
30 -bracket	1.76	
31 -idle	6.86	.5
32 -belt tension	6.86	.5
33 belt	4.58	.4

34 Duct, hot air	11.33	
35 -exhaust air	18.76	
36 Tube, hot air feed	2.99	

HEATER		
Blower assy exc	58.64	1.0
-from 1039278	58.64	1.0

HOOD		
FIG E		
37 Hood panel (p.2.2)	65.65	.8
38 Support rod	1.78	.2
39 Lock	2.99	.3
40 striker guide plate	1.03	
41 pivot bolt assy	4.53	.3
42 Safety catch	1.72	.2
43 spring	.62	
44 Hinge	2.88	# .3

After hood is removed.

FRONT FENDER		
FIGS E & F		
45 Fender exc (p1.8)	34.64	1.5
-from 1033852 (p1.8)	34.64	1.5
46 Moulding, side	5.59	.3
47 Emblem, 600	2.38	.2
48 Inner panel, right	61.33	§ 3.0
-left exc	61.33	§ 3.0
-from 1033852	61.33	§ 3.0
49 Middle panel	61.33	# 2.5
50 Wheelhouse, right	33.89	† 1.5
51 -left exc	33.89	† 1.5
51 -from 1016475	33.89	† 1.5

After fender is removed
§ After middle panel is removed.
† After inner panels are removed & knee is loosened.

ELECTRICAL		
-------------------	--	--

BATTERY		
Battery	51.56	
52 Tray	4.53	

ALTERNATOR & REGULATOR		
Alternator pulley	9.00	.4
housing, front	18.76	
-rear	20.61	# 1.3
Regulator	28.97	.5

IGNITION		
Contact breaker assy	11.00	.4
-lid	.86	
-gasket	.29	
Vacuum spark advance	9.53	.5
Ignition coil exc	16.46	.4
-from 1500001	16.46	.4

HEADLAMP (FIG H)		
Aim headlamp	.4	
Assembly	20.91	.5
53 Housing	6.06	
54 Seal beam	3.50	.2
55 retainer ring exc	4.42	
-from 1020209	4.42	
56 mounting ring	4.42	
57 Socket & wiring	3.30	.3

PARKING & TURN SIGNAL LAMP FIG I		
Assembly	16.98	.3
58 Base	5.54	
59 Lens	3.00	.2
rim	4.02	
61 gasket	1.62	
62 Socket & wire	1.78	.3
63 Bulb	1.43	

SIDE LAMP, FRONT (FIG J)		
64 Assembly exc	13.40	.3
-from 1043377	13.40	.3
65 Base	6.67	
66 Lens & reflector	4.42	.2
67 gasket	.84	
68 Seal exc	3.30	
-from 1043377	3.30	
69 Socket exc	1.54	.3
-from 1043377	.81	.3
70 Bulb	.51	

SIDE LAMP, REAR WITH BACK-UP LAMP (FIG K)		
Assembly exc	24.86	.3
-from 1020209	24.86	.3
71 Base	18.46	
72 cushion	2.00	
73 Lens, side lamp	1.72	.2
74 -back-up	2.84	.2
75 gasket	.92	
76 Reflector, each	3.12	.2
77 Bulb, side lamp	.51	
78 -back-up	1.14	

TAIL LAMP (FIG L)		
79 Assembly	16.46	.3
80 Base	9.46	
81 seal	2.53	
82 Lens exc	6.49	.3
-from 1033672	6.49	
83 gasket	1.25	
84 Socket & wiring	2.95	.3
85 Bulb	1.43	

LICENSE LAMP - SIDE TYPE (FIG M)		
86 Base (license support)	7.74	.5
87 Lamp assy, R-L wo/base	13.20	.3
88 housing	7.55	.3
89 -seal	2.20	
90 socket & wiring	3.65	.3
91 lens	1.43	.2
92 -gasket	.81	
93 bulb	.51	

LICENSE LAMP-TOP TYPE		
94 Base & socket	5.79	
95 gasket	.86	
96 Lens	2.24	

HORN		
Horn assy	12.28	.2

Time is for overhaul.

WHEELS-SUSPENSION-STEERING

WHEELS & FRONT SUSPENSION			STEERING			REAR SUSPENSION		
Toe-in, adjust 5			120 Tie rod end, R-L	10.36	6	Brake drum	30.29	.6
WHEELS (FIG N)			121 boot	2.53		support plate exc	11.33	1.0
Wheel (p.5)	21.12	# .3	FIG O			hose	5.28	.6
Hub cap	7.08		105 Lower arm, to 1018285	16.04	1.0	Axle beam	63.16	2.5
Bearing, front wheel-			106 -1020209 to 1033851	20.32	1.0	Spring	24.71	.7
97 bearing, outer or inner	5.76	1.2	106 -from 1033852	20.32	1.0	retaining plate	3.96	.4
98 seal exc	1.54		107 ball joint	10.36	.5	shackle	7.02	.3
-from 1020209	1.54		108 boot	2.24		Shock absorber	20.32	.3
99 cover, bearing	2.00		109 Stabilizer shaft	21.12	.4			
100 dust seal	2.11		110 bushing, to arm exc	1.10	.3			
Bearing, rear wheel-			-from 1033852	1.10	.3			
bearing, outer	3.81	.4	111 stabilizer supt, R-L	6.03	.2			
-inner	4.55	.4	112 bracket, R-L	2.00				
seal	1.54		113 Shock & spring assy	46.87	1.0			
cap	1.54		114 shock only	38.21	.7			
FRONT SUSPENSION (FIG N)			115 spring only exc	13.90				
Hub	20.32	\$ 1.3	-from 1020209	13.90				
Brake disc	23.46		116 seat, upper exc	4.42				
-shield	5.54	1.2	-from 1020209	4.64				
caliper assy w/pads	76.97	1.0	117 dust cover exc	2.84				
hose	6.47	.4	-from 1020209	2.84				
101 Drive shaft sub assy exc	94.71	1.5	118 mounting cushion	9.04				
-from 1020209	94.71	1.5	119 top cap	1.54				
102 bellows	6.03							
103 joint, inboard	61.33							
104 Knuckle	25.03	1.3						

Add for balance, weights & valve stem
 § Includes replace wheel bearings & bleed brakes

Right 1.0, left 1.8.
 § Time is for overhaul

ENGINE-CLUTCH-TRANSMISSION-FUEL-EXHAUST

ENGINE			FUEL			EXHAUST		
ENGINE, RENEW			Gasoline tank	38.21	1.0	1020209 TO 1033851		
All models	3.2		filler tube	4.66	.4	Heat exchanger	61.86	1.4
ENGINE PARTS (FIG B)			-pipe exc	13.97	.4	Manifold	25.83	.6
Shroud, right	5.37	.3	-from 1020209	13.97	.4	Heater exhaust pipe	17.95	.6
-left, to 1017730	5.37	.5	-cap	3.30		-joint	17.16	.6
-1017731 to 1500000	5.79	.5	Fuel pump	33.99	.5	Muffler, main	38.21	.5
-from 1500001	5.37	.5	-strainer	3.50	.3	primary, exc	38.21	.7
133 Mounting cushion, front R-L	4.99	.8	Air cleaner element	6.44	.2	-from 1022320	38.21	.7
134 bracket, exc	17.95	.6	case exc	18.76	.4	FROM 1033852		
-from 1033852	20.32		-from 1033852	18.76	.4	Heat exchanger	92.77	1.4
135 Mounting cushion, rear	6.03	1.0	case cover	4.25		Manifold	16.46	.6
136 bracket	4.53					Heater exhaust pipe	25.83	.6
						-joint pipe	34.64	.6
						Muffler, main	38.21	.5
						-primary	38.21	.7
CLUTCH & TRANSMISSION								
CLUTCH (OR DISC) R&R OR RENEW			TO 1018285					
All models	1.7		Manifold, right	17.95	.6			
TRANSMISSION PARTS, RENEW			-left	17.95	.6			
Primary socket or chain	2.0		Muffler, primary	38.21	.7			
Mainshaft	5.0		-main	38.21	.5			
Countershaft	5.0							

BODY

COWL & WINDSHIELD			REAR QUARTER			TRUNK LID		
FIGS F & G			FIGS F & G			FIG P		
137 Cowl top panel (p1.2)	28.97	# 8.0	149 Back window frame exc	28.97	# 2.5	Glass & lower chnl	26.55	# 9
138 Windshield header rail	11.33	# 1.5	149 -from 1020209	28.97	# 2.5	glass only	24.28	
139 glass	115.56	1.2	150 gutter, top	10.36		run channel, front & upper	2.99	
140 rubber chnl exc	17.16		151 -side	4.99		-rear	4.99	
140 -from 1020209	17.16		152 glass	36.42	1.1	garnish midg	6.49	
141 reveal midg, R-L upper	2.27		153 rubber channel	13.93		regulator	12.28	.7
142 -lower	2.24		154 reveal midg, R-L upper	2.02		Ventilator assy w/glass	24.28	.8
143 -joint, each	.52		155 -lower	2.02		glass	8.76	.6
Instrument panel exc	30.29	3.5	156 -joint, each	.52		-frame	16.98	
-from 1020209	30.29	3.5	HEADLINING, R&R 6.			weatherstrip	1.74	
crash pad	23.46	1.8	#After roof & back glass are removed.			gutter	1.43	
-garnish, upper	13.20	.9	REAR QUARTER			Handle & button, outside	10.36	.5
door, glove box exc	4.99	.2	FIGS F & G			Lock	11.33	.5
-from 1020209	4.99	.2	157 Outer panel exc (p2.8)	65.65	11.0	cy & keys (w/ign & trunk)	13.75	.5
-lining, inner	2.84	.3	-from 1020209 (p2.8)	65.65	11.0	striker	4.42	.2
-handle	1.34		158 Inner panel, to 1018285	61.33	# 5.0	Hinge, upper	5.54	# 3
-emblem	1.52		1020209 to 1049184	61.33	# 5.0	-lower	6.67	# 3
Wiper arm	4.53	.2	from 1049185	61.33	# 5.0	#After door is removed.		
blade	3.90	.2	159 Wheelhouse	18.76	# 1.5	TRUNK LID		
motor exc	46.87	.5	160 Moulding, side	6.73	.3	168 Lid, exc	36.80	# 1.0
-from 1020209	46.87	.5	Vent louvre, outer	9.04	.3	168 -from 1020209	36.80	# 1.0
washer reservoir	3.30	.2	-inner	2.24		169 Name plate, Honda exc	1.63	.3
Mirror, inside	6.82	.2	-curtain	.82		169 -from 1020209	4.16	.3
Visor	6.03	.2	161 Glass	22.77	.5	170 Lock & cylinder	9.50	.2
#After windshield & instrument panel are removed.			162 frame	30.14		171 cylinder & keys	5.54	.3
#After roof & windshield are removed.			163 rubber channel	8.12		172 striker	1.54	.2
ROOF & BACK WINDOW			164 seal	9.13		173 -bracket	1.87	
FIGS F & G			165 lock	5.54	.3	174 Support	1.25	.4
144 Roof panel, exc (p3.2)	61.33	15.0	ROCKER PANEL			175 -spring	1.32	
-from 1016385 (p3.2)	61.33	15.0	FIG F			176 Hinge strap, exc	2.84	# 2
extn, front, see cowl top			166 Outer panel (p1.0)	17.95	3.5	176 -from 1020209	2.84	# 2
145 -rear exc	25.03		Sill protector exc	4.99	.2	177 Weatherstrip	11.44	.4
-from 1016385	25.03		-from 1049185	4.99	.2	#Sold as painted part - order by color.		
146 Rain gutter cover, front	6.73	.3	-plate	6.67	.2	REAR BODY		
147 -rear	6.73	.3	DOOR			FIG F		
148 -joint	.81		Assembly, Remove & Reinstall			178 Panel, lower (p1.5)	19.82	# 2.5
			Trim panel, Remove & Reinstall			After bumper is removed.		
			Door (p2.5)			SEAT TRACKS		
			Window frame			To 1017950, R-L inner	8.87	# 6
			Weatherstrip around door			-outer	6.67	
			167 Moulding, side			From 1017951, R-L inner	8.87	# 6
			Mirror			-outer	6.67	
						#Time is for overhaul.		

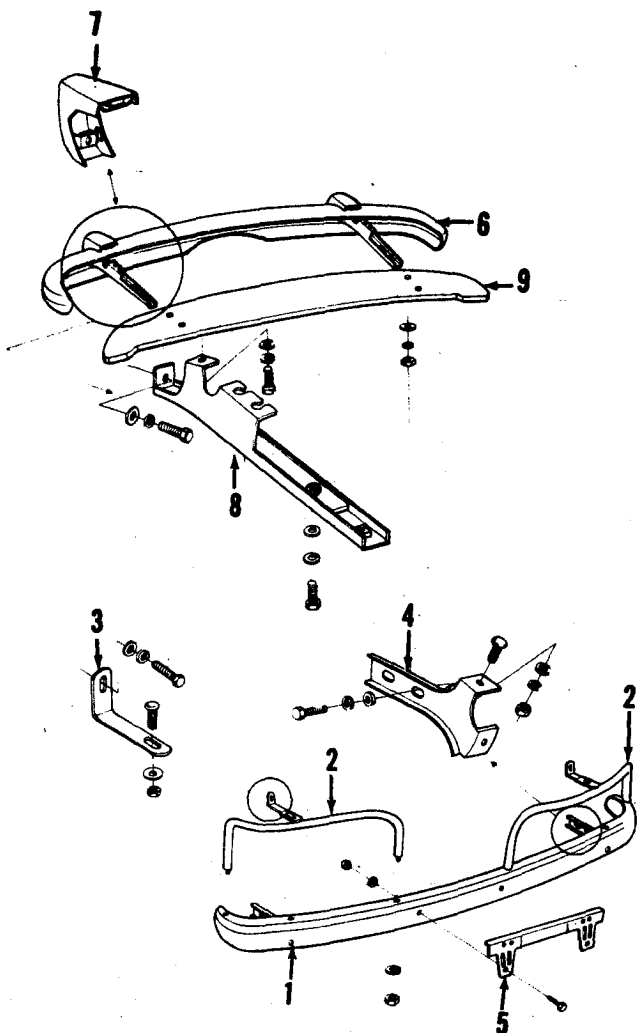


FIG A - BUMPERS

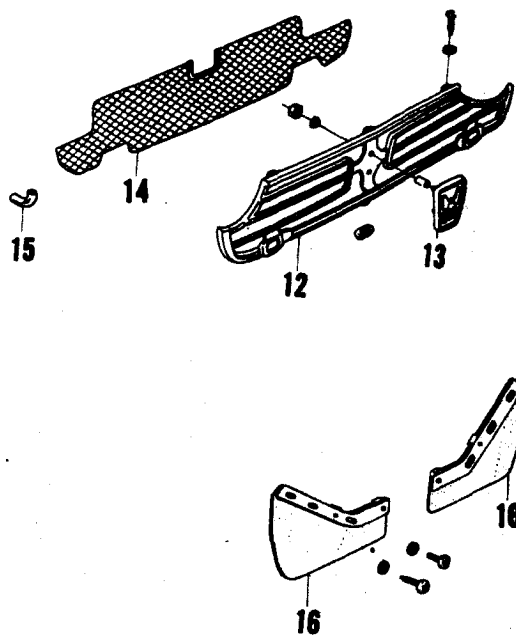


FIG C - GRILLE & MUD FLAPS

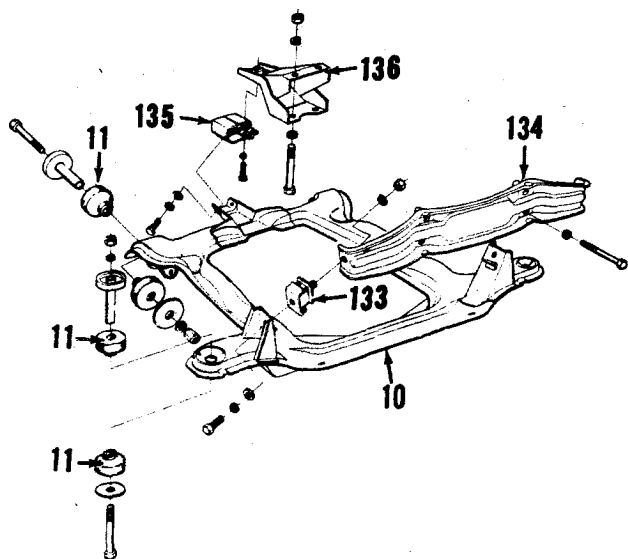


FIG B - FRAME & ENGINE MOUNTS

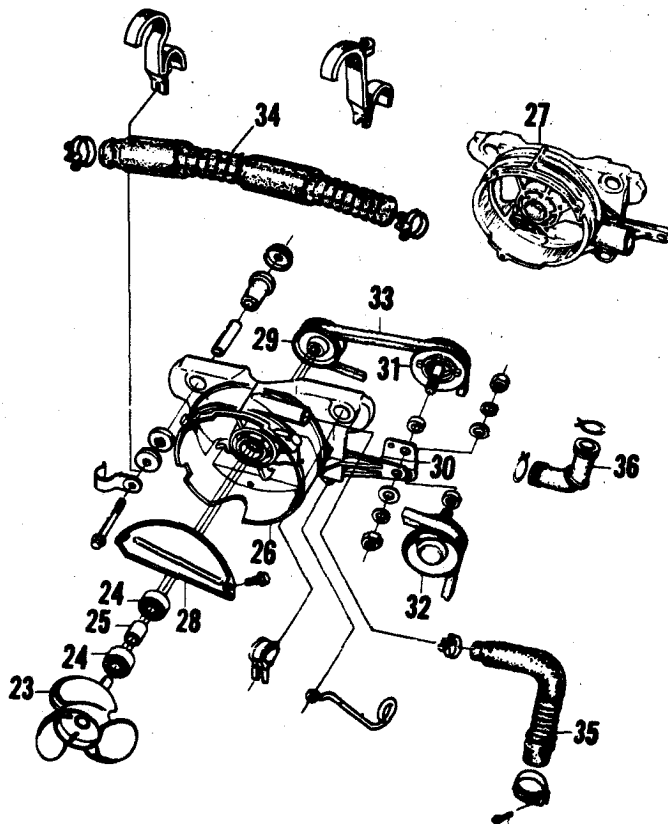


FIG D - COOLING

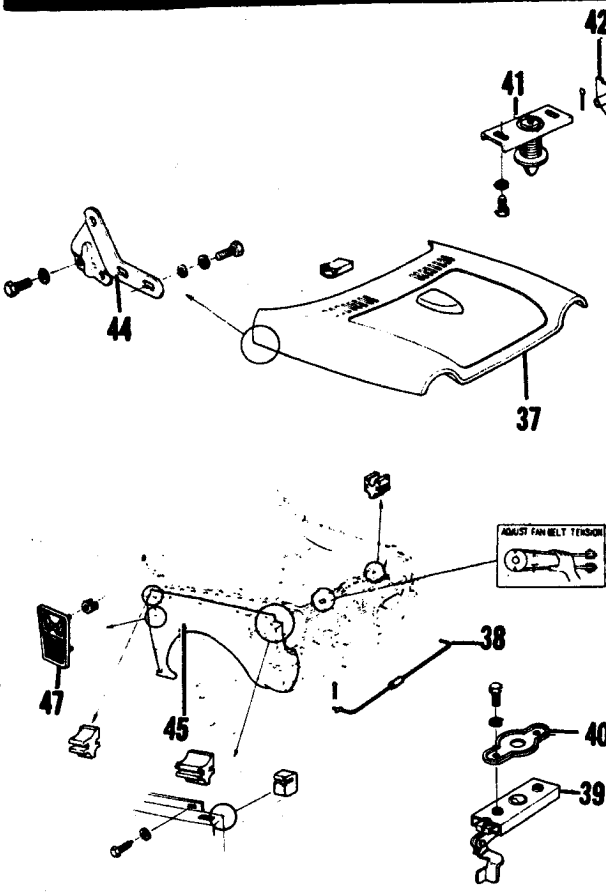


FIG E - HOOD & FENDER

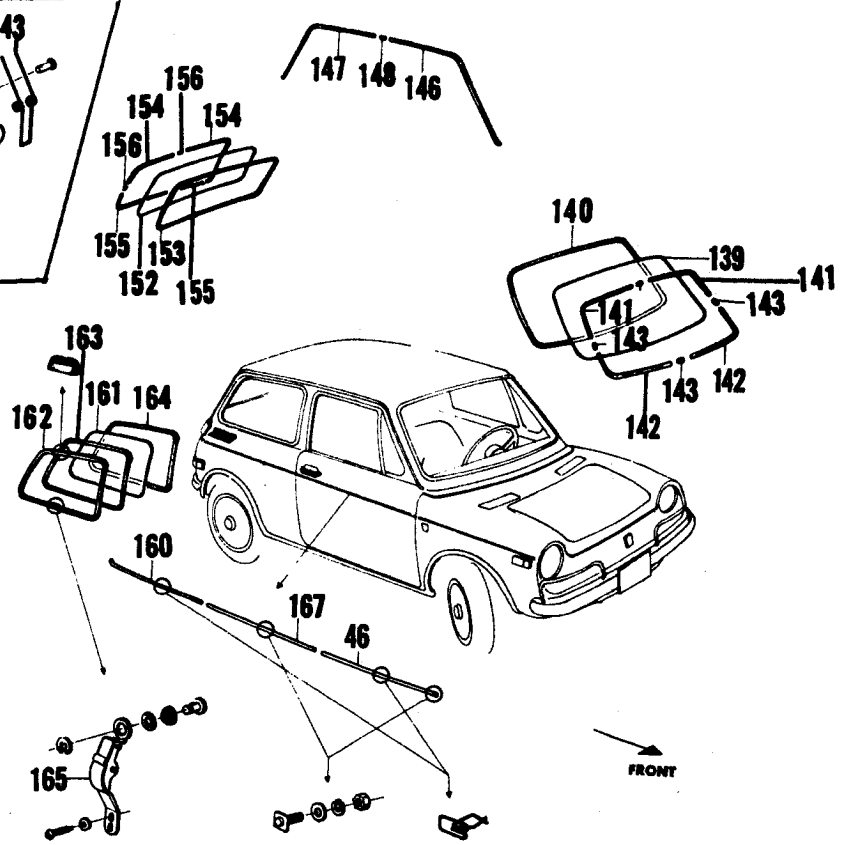


FIG G - MOULDINGS & GLASS

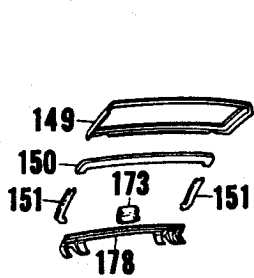
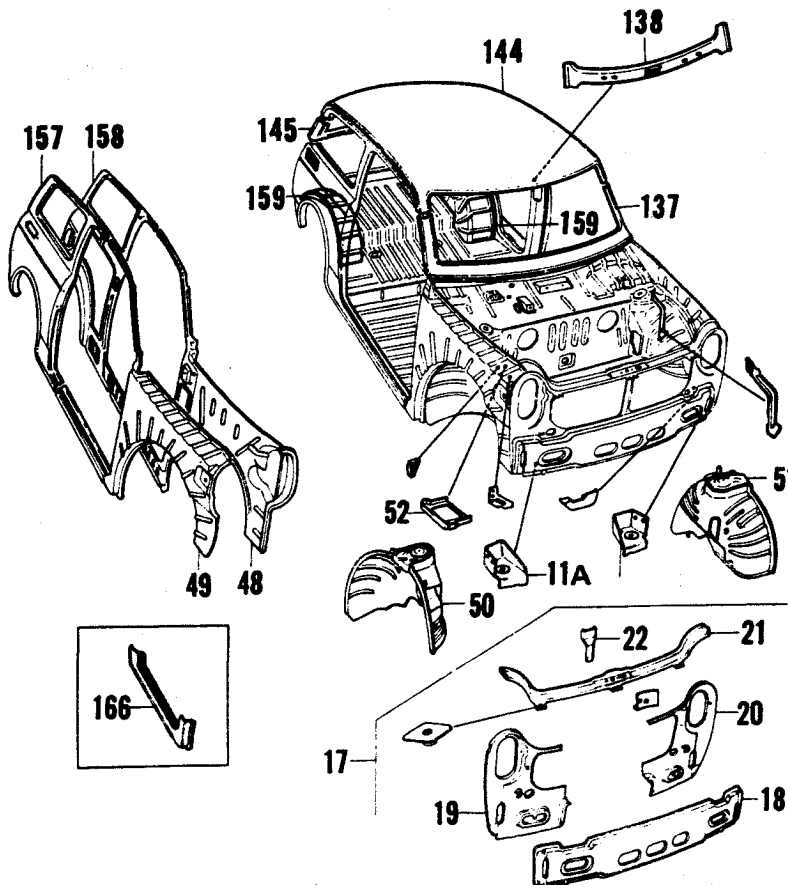


FIG F - SHEET METAL



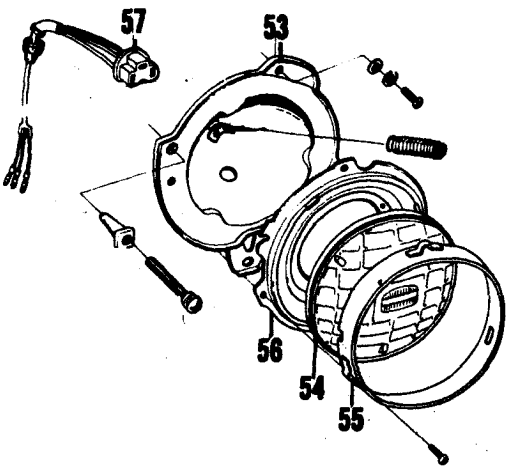


FIG H - HEADLAMP

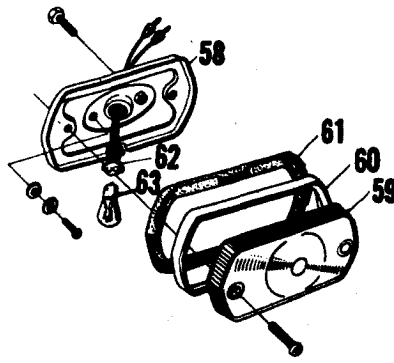


FIG I - PARKING & TURN SIGNAL LAMP

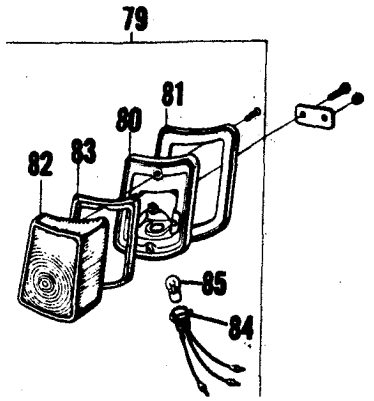


FIG L - TAIL LAMP

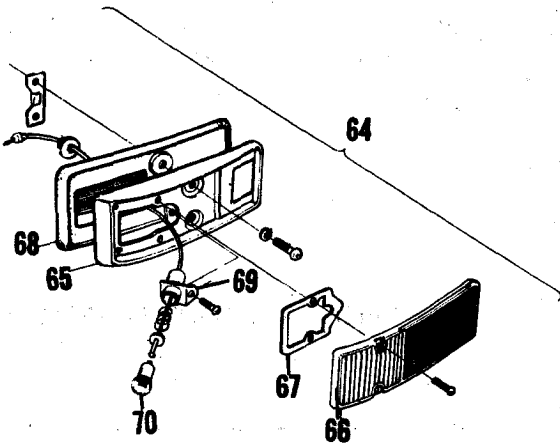


FIG J - SIDE LAMP - FRONT

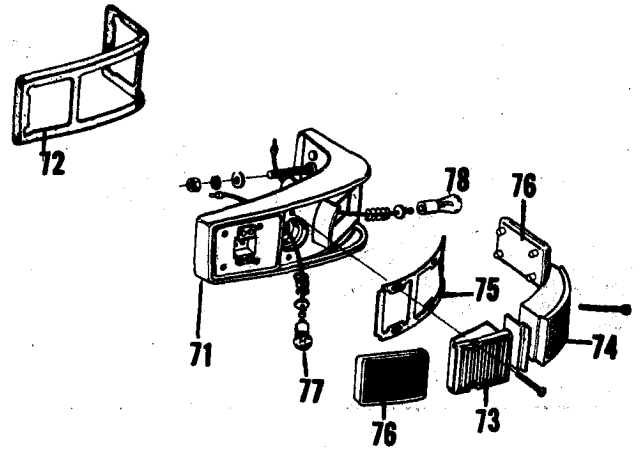


FIG K - SIDE & BACK-UP LAMP - REAR

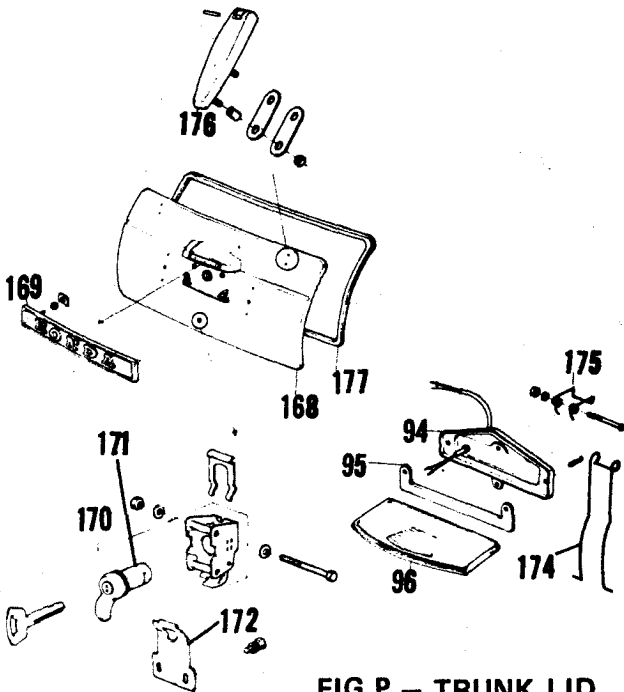


FIG P - TRUNK LID

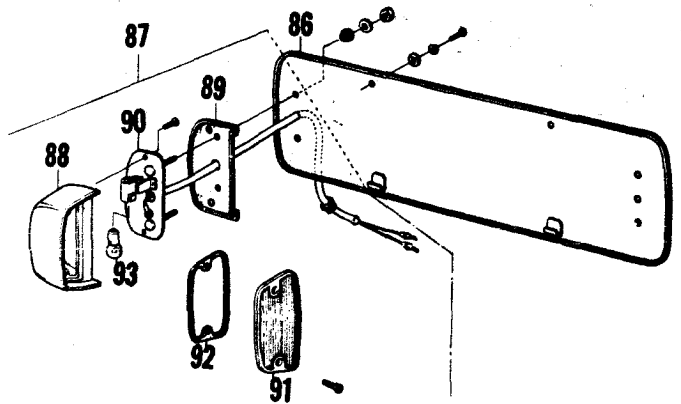
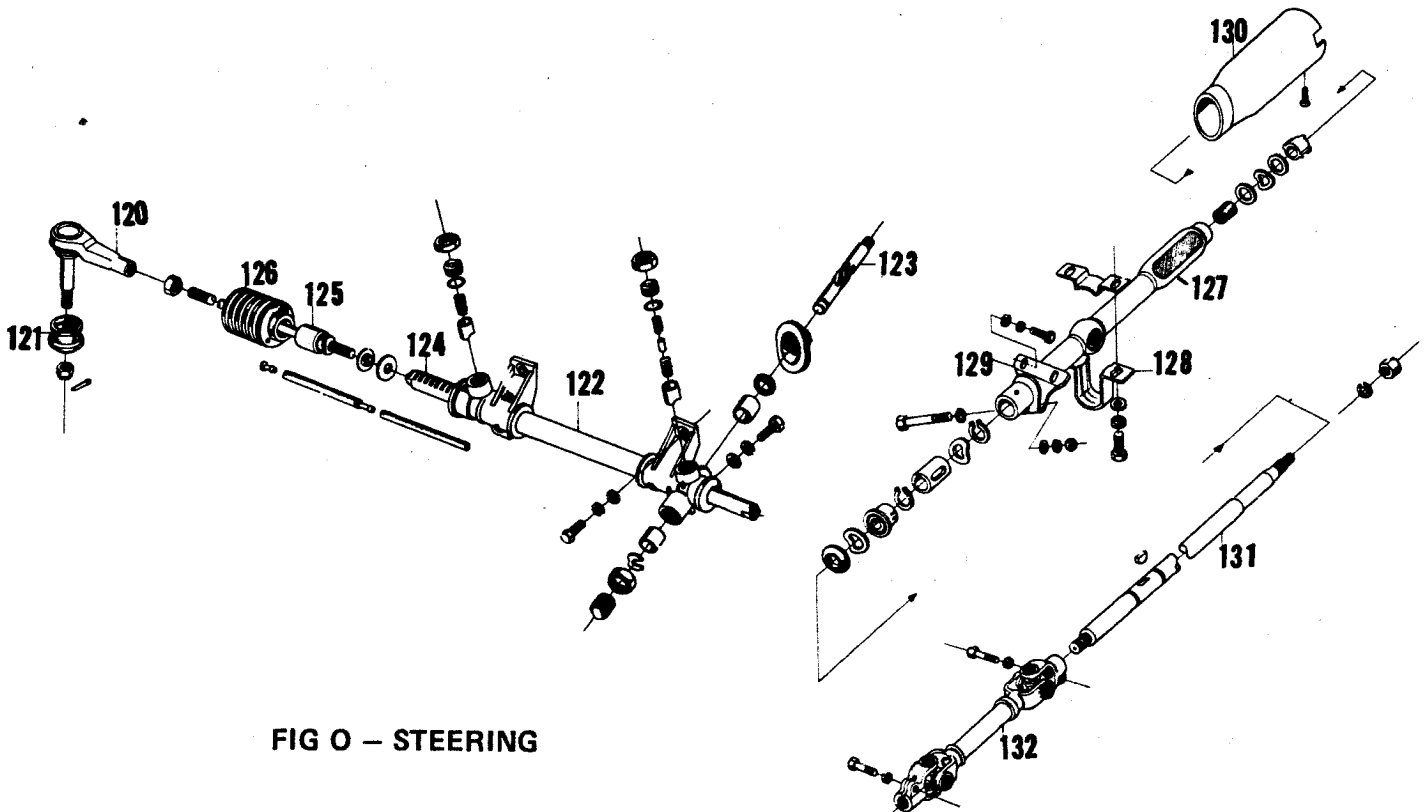
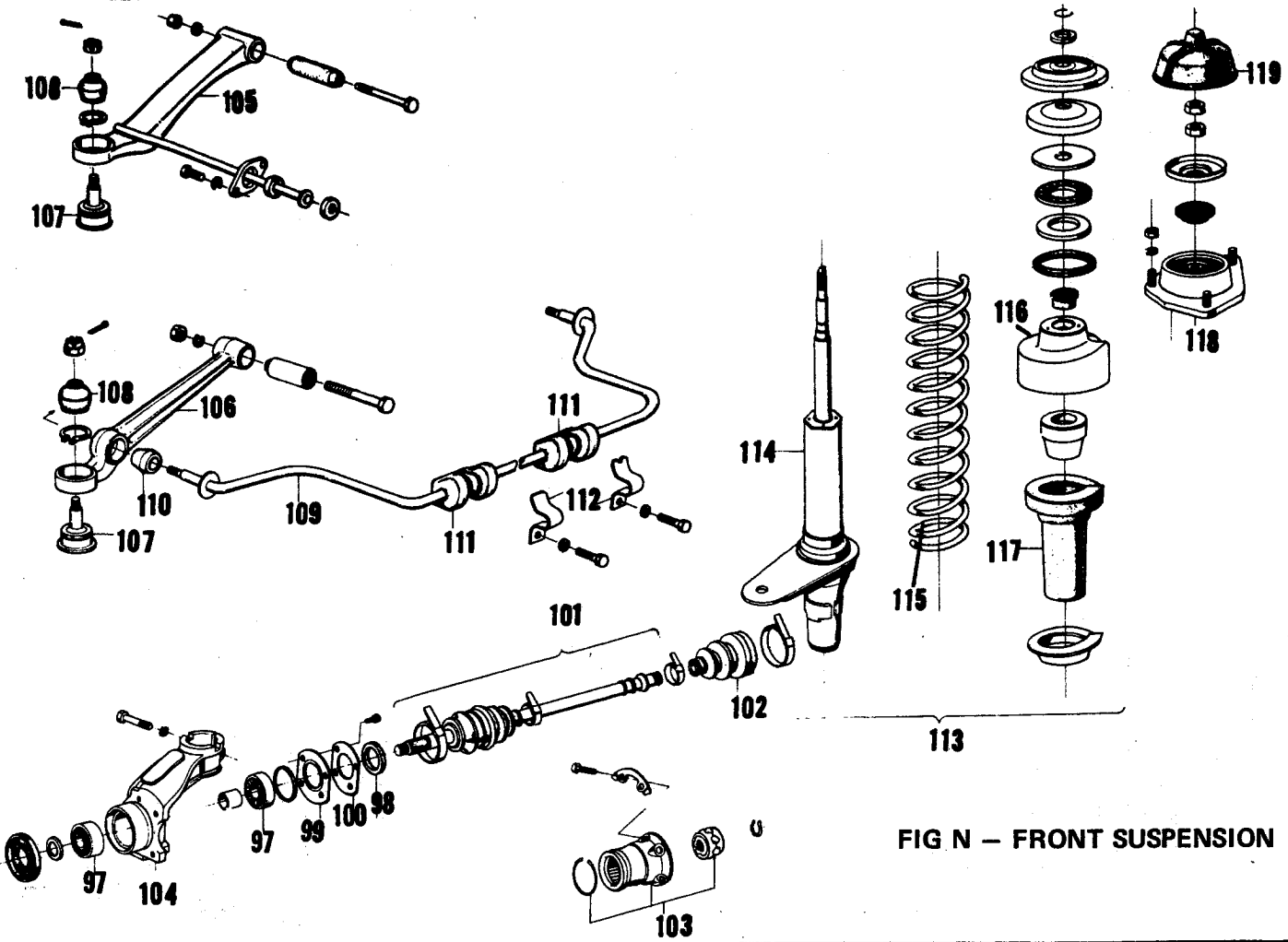


FIG M - LICENSE LAMP



BUMPERS-FRAME-GRILLE-COOLING-HOOD-FENDERS-ELECTRICAL

BUMPERS			HEATER			PARKING & TURN SIGNAL LAMP					
FRONT BUMPER (FIG A)			10 Blower assy exc 63.64			FIG J					
Assy, R&R .5, Overhaul 1.1			10 -from 1000023 63.64			71 Assembly 16.98 .3					
1	Face bar & guard rail	65.65 .5	HOOD			72 Base 5.54					
2	face bar only	54.10 .7				73 Lens 3.00 .2					
3	guard rail only	18.76 .3	FIG E			74 rim 4.02					
4	Mounting bracket, R-L	4.53				42 Hood panel (p2.2) 65.65 .8			75 gasket 1.62		
5	License plate bracket	2.53 .2				15 Moulding, see grille			26 Socket & wire 1.78 .3		
REAR BUMPER (FIG A)						43 Emblem 4.47 .2			77 Bulb 1.43		
Assy, Overhaul 1.0						44 Support rod, to 1003346 4.53 .2			SIDE LAMP, FRONT (FIG K)		
6	Face bar, cntr exc	21.12 .4				45 -1003347 to 1005966 2.00 .2			78 Assembly exc 14.08 .3		
6	-from 1005967	23.46 .4				46 -from 1005967 1.54 .2			-from 1005967 14.08 .3		
7	-side exc	27.37 .5				47 bracket, from 100334792			79 Base exc 6.67		
7	-from 1005967	28.97 .5				48 Lock exc 2.99 .3			-from 1005967 6.67		
8	-joint, R-L	.68				48 -from 1005967 2.99 .3			80 Lens & reflector 4.42 .2		
9	-cushion, cntr	1.54				49 striker guide plate 1.03 .3			81 gasket84		
10	Guard & cushion, R-L	16.98 .3				50 pivot bolt assy 4.53			82 Seal exc 3.30		
11	cushion only	2.24	51 release cable assy 2.99 .4			-from 1005571 3.30					
FRAME			52 -grip only 1.72			83 Socket 1.72 .3					
FIG B			53 Safety catch 1.72 .2			84 Bulb51					
12	Sub frame, front	76.97 3.4	54 spring62			85 Mounting plate81					
13	mounting cushion (8)	1.54	55 Hinge, exc 4.53 #.2			SIDE LAMP, REAR (FIG L)					
GRILLE & FRONT PANELS			55 -from 1005967 4.07 #.2			86 Assembly exc 14.08 .3					
FIGS C-F-G			56 bracket 2.24			-from 1005571 14.08 .3					
14 Grille 27.37 .8			57 shim57			87 Base exc 6.67					
FIGS C-F-G			<i># After hood is removed.</i>			-from 1005967 6.67					
16	lower	10.47 .3	FRONT FENDER			88 cushion exc 3.30					
17	screen, R-L	4.07	FIGS F & G			-from 1005571 3.30					
18	Mudguard, R-L	4.42 .2	58 Fender (p1.8) 38.21 1.5			89 Lens exc 4.42 .2					
19	Splashguard, R-L	2.24	59 Inner panel exc 38.21 #.3			-from 1002080 4.42 .2					
Grille panels-			60 -stiffener 9.04 #.3			90 gasket64					
20	lower, skirt (p.8)	12.28 .5	61 Wheelhouse 33.89 \$ 1.5			91 Bulb51					
21	upper assy (p1.2)	28.97 #.8	61A cap, upper 8.87			91A Socket & wiring 1.72 .3					
22	cntr only	28.97	62 mounting bracket exc 5.54			TAIL & BACK-UP LAMP					
23	side only	7.08 #.8	-from 1005968 5.54			FIG M					
Bulkhead panels-			63 -reinforcement 5.54			92 Assembly exc 32.87 .3					
24	assembly	38.21	<i># After fender & door are removed.</i>			-from 1005967 32.87 .3					
25	section only, upper	13.20 \$ 2.0	<i>‡ After inner panel is removed & knee is loosened.</i>			93 Housing 14.17					
26	lower	16.98 \$ 2.0	ELECTRICAL			94 seal 2.84					
27	side	13.20 † 1.5	BATTERY			95 Lens, tail exc 5.54 .3					
28	brkt for park lamp	2.84	Battery 35.90			-from 1005967 5.54 .3					
29	-for bmpr guard	8.87	64 Tray 6.49			96 -back-up 2.24 .3					
<i># After bumper, grille & lower skirt are removed.</i>			ALTERNATOR & REGULATOR			97 Door 10.36 .2					
<i>‡ After bumper, grille & lamps are removed.</i>			Alternator pulley 9.00 .4			98 gasket 2.11					
<i>† After lower section & fender are removed.</i>			housing, front 18.76			99 Reflector, tail 4.53					
COOLING			-rear 20.61 #.1.3			100 -back-up 2.84					
FIG D			Regulator 28.97 .5			101 Socket & wiring 6.12 .2					
30	Fan	6.86 .9	IGNITION			102 Bulb, tail 1.43					
31	bearing	3.28	Contact breaker assy 11.00 .4			103 -back-up 1.14					
32	-spacer	.66	-lid86			LICENSE LAMP (FIG N)					
33	housing	31.17 .7	-gasket29			104 Base, license support 12.03 .5					
34	-cover	5.70	Vacuum spark advance 9.53 .5			105 Lamp assy, R-L wo/base 13.20 .3					
35	pulley, fan	3.39 .8	Ignition coil 16.46 .4			106 housing 7.55 .3					
36	-bracket	1.76	HEADLAMP (FIG I)			107 -seal 2.20					
37	idle	6.86 .5	Aim headlamp4			108 socket & wiring 3.65 .3					
38	-belt tension	6.86 .5	65 Assembly 21.89 .5			109 lens 1.43 .2					
39	belt	4.58 .4	66 Housing 11.33			110 -gasket81					
40	Duct, hot air	11.33	67 Seal beam 3.50 .2			111 Bulb51					
41	-exhaust air	17.26	68 retaining ring 4.42			HORN					
			69 mounting ring 4.42			Horn assy 16.98 .2					
			70 Socket & wiring 3.30 .3			<i># Time is for overhaul.</i>					

BODY

COWL & WINDSHIELD		REAR QUARTER		TAIL GATE	
FIGS E-F-G-H		FIGS F-G-H		Gate & glass assy (p1.2) 80.91 .5	
Cowl top panel-		172 Outer panel only (p3.2) 63.16 #		Lock 6.67 .2	
150 outer (vent grille) (p1.2) 20.32		-w/roof side panel (p3.7) .. 115.79		striker 1.54	
151 inner 15.11		173 Inner panel exc 63.16 \$ 3.5		cylinder & keys 6.67 .2	
152 Windshield header rail 11.33 # 1.5		-from 1005967 63.16		Hinges & attaching bar 15.49 # .4	
153 pillar, inner 13.20		174 Lock pillar 18.76 \$ 1.5		Torsion bar, each 2.84	
154 glass 126.90 1.2		175 Gutter, rear at gate 4.53		link 1.72	
155 rubber channel 16.62		176 Wheelhouse 18.76 \$ 1.5		Weatherstrip on body 12.28 .4	
156 reveal midg, R-L upper 2.27		177 Gas filler lid 2.99 .2		#After gate is removed.	
157 -lower 2.27		-striker50			
158 -joint, each52		-cylinder 6.67			
Instrument panel 11.33		178 -adaptor 16.98			
door, glove box 8.87 .3		-hose cover 11.33 .3			
lock 3.96		179 Moulding, belt 5.59 .3			
emblem 2.38		180 -front pillar 4.47 .3			
Wiper arm 4.53 .2		181 Emblem 9.33 .3			
blade 3.98 .2		182 Glass 15.96 .4			
motor 50.49 .5		183 rubber channel 11.44			
washer reservoir 3.30 .2		184 lock 6.67 .2			
Mirror, inside 8.51 .2		185 hinge92 .2			
Visor 6.03 .2		#Right 12.0, left 13.0.			
#After roof & windshield are removed.		‡After outer panel is removed.			
ROOF		ROCKER PANEL		SPARE TIRE LID	
FIGS F-G-H		FIGS F & G		Lid (p1.5) 18.76 .8	
159 Roof panel, top (p2.8) 61.33 12.0		186 Outer panel (p1.0) 31.03 # 2.5		seal 5.54	
160 -side (also sold w/qtr) 28.97 # 4.0		187 Inner panel exc 11.33		lock exc 3.30	
161 Rail, rear above gate 15.11 \$ 1.5		-from 1005967 11.33		-from 1005967 3.30	
162 -side inner 4.99		Sill projector exc 5.54 .2		stopper exc 2.00	
163 Rain gutter 9.04 2.0		#Cut within door opening.		-from 1005967 2.00	
164 chrome cover, front 6.73 .2				safety catch exc 3.30	
165 -rear 5.04 .2				-from 1005967 3.30	
166 -joint64				Spare tire lock 6.67	
167 Weatherstrip above door 5.59				-band 3.30	
Moulding, roof top-				-release wire 3.30	
168 -front or rear 4.11 .2				-lock, R-L 3.45	
169 -end, front 2.13				Trunk board beam, R-L 2.84	
170 -rear 2.13					
171 -joint46					
Console assy, inside 55.52					
HEADLINING, R&R .6.					
#After roof panel is removed.					
‡After roof & lift gate are removed.					
DOOR		REAR BODY			
FIGS F & H		FIGS F & G		Rear body panel-	
Assembly, Remove & Reinstall .. 5		194 outer complete exc (p2.0) 38.21 # 6.0		-from 1005967 38.21 # 6.0	
Trim panel, Remove & Reinstall .. 3		195 -upper only exc 28.97 # 6.0		-from 1005967 28.97 # 6.0	
188 Door (p2.5) 98.68 3.0		196 -lower only exc 19.82 \$ 2.0		-from 1005967 19.82 \$ 2.0	
189 Window frame 19.82 1.5		197 inner (bulkhead) exc 18.76		-from 1005967 18.76	
Weatherstrip around door 13.33 .5		198 reinforcement 13.20		Name plate 4.16	
190 Moulding, wndo frame, front 7.81 .2		199 Floor pan, rear 50.49		200 gas tank access cover exc 13.20	
191 -rear 2.86 .2		201 crossmember, rear 17.95		-from 1005967 13.20	
192 Mirror, order by color 21.20 .2		202 bumper bracket 2.24		#After bumper & lamps & spare tire lid are removed.	
193 Glass & lower channel 31.89 .7				‡After bumper is removed.	
glass only 28.85					
run channel 7.08					
regulator 12.28 .7					
Handle & button, outside 7.74 .5					
Lock 16.98 .5					
cylinder & keys 6.67 .5					
striker 2.88					
Hinge, upper 5.54 # .3					
-lower 6.67 # .3					
#After door is removed.					
SEAT TRACKS					
Track, driver seat, R-L 11.33 # .6					
-pass seat, R-L 13.20 # .6					
#Time is for overhaul.					

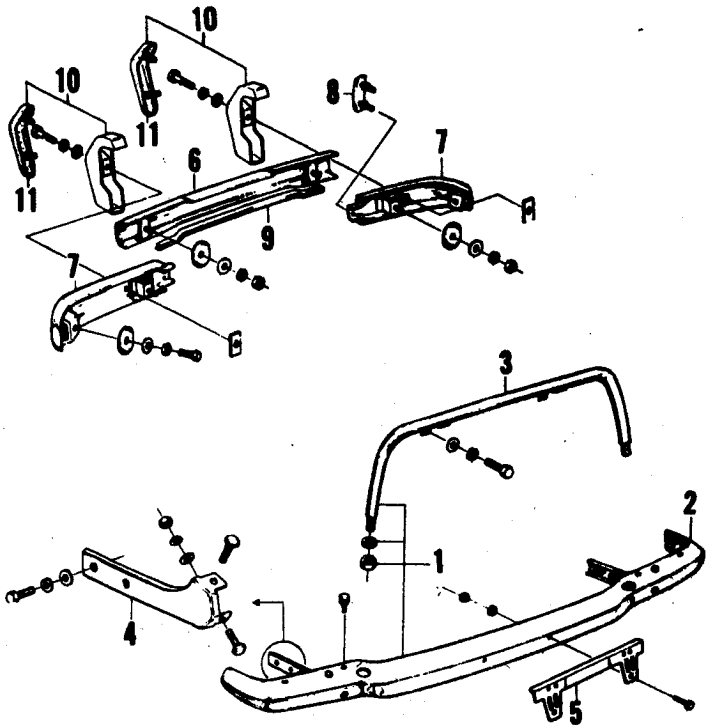


FIG A - BUMPERS

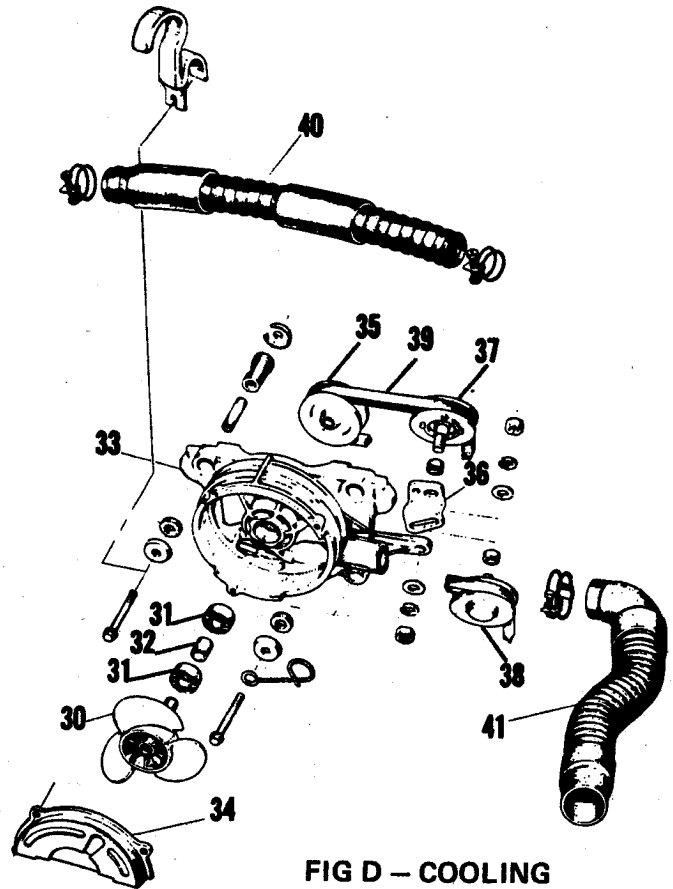


FIG D - COOLING

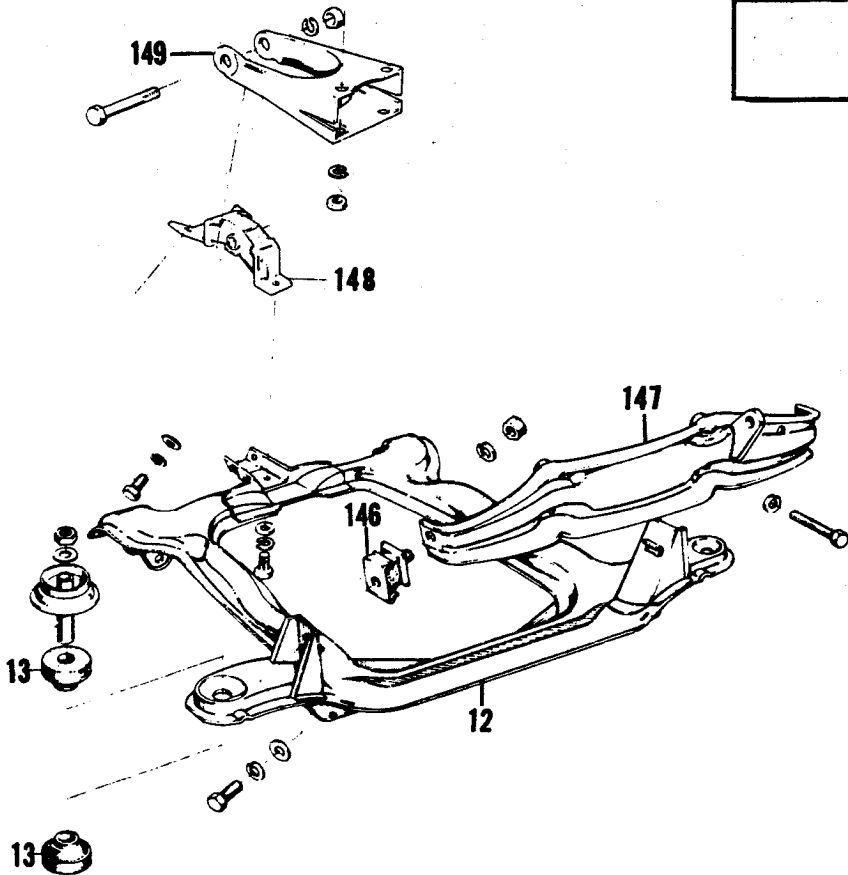


FIG B - FRAME & ENGINE MOUNTS

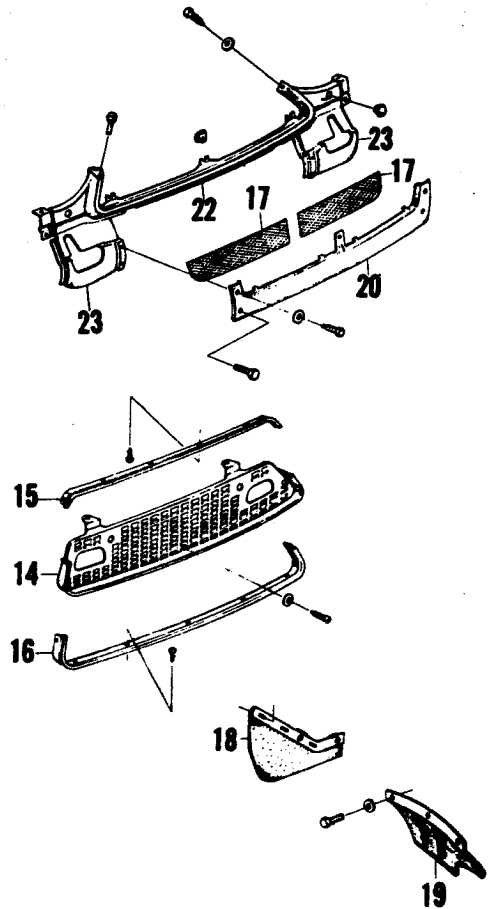


FIG C - GRILLE

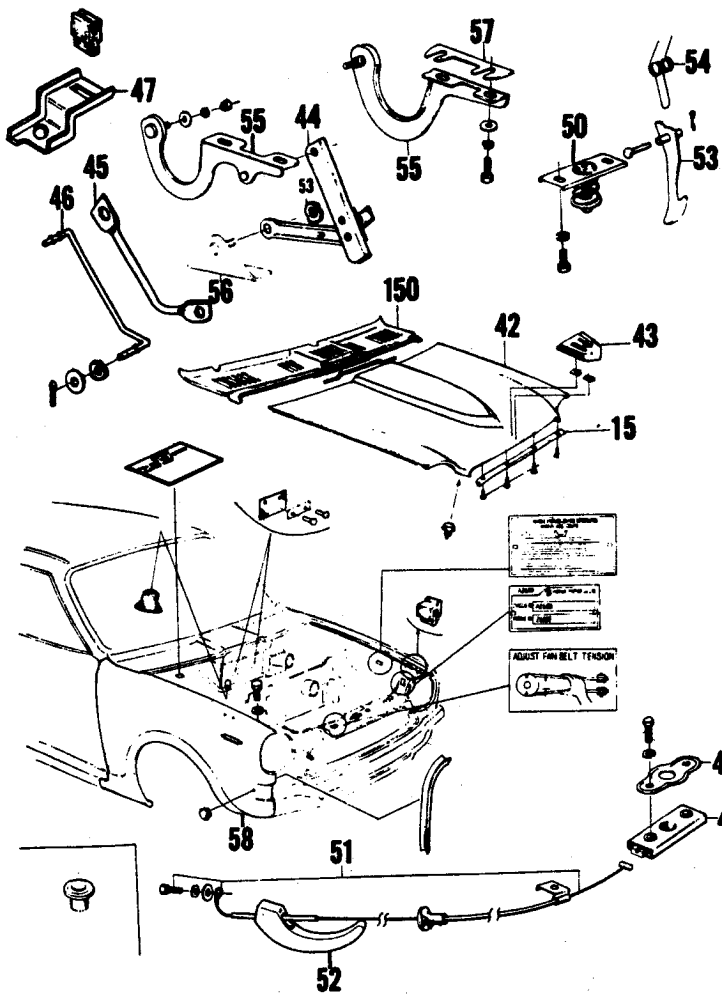


FIG E - HOOD & FENDER

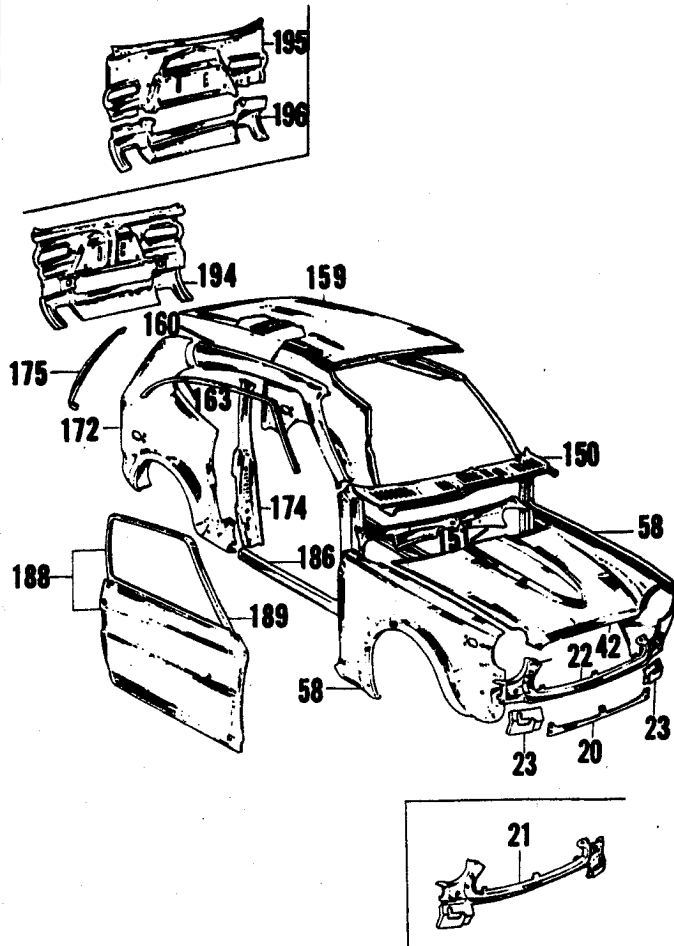


FIG F - SHEET METAL - OUTER

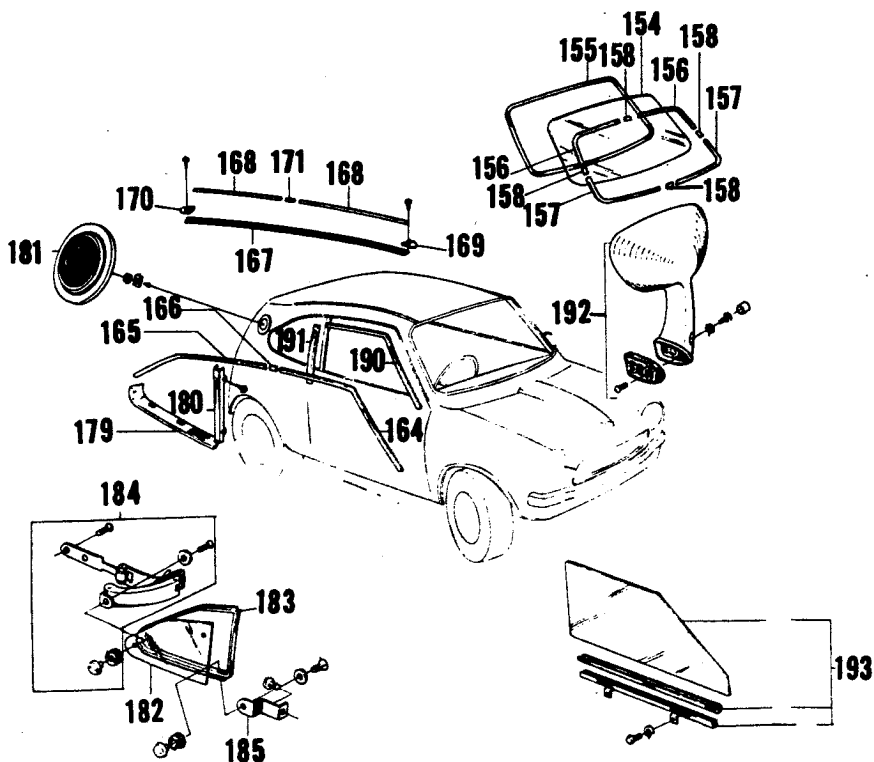


FIG H - MOULDINGS & GLASS

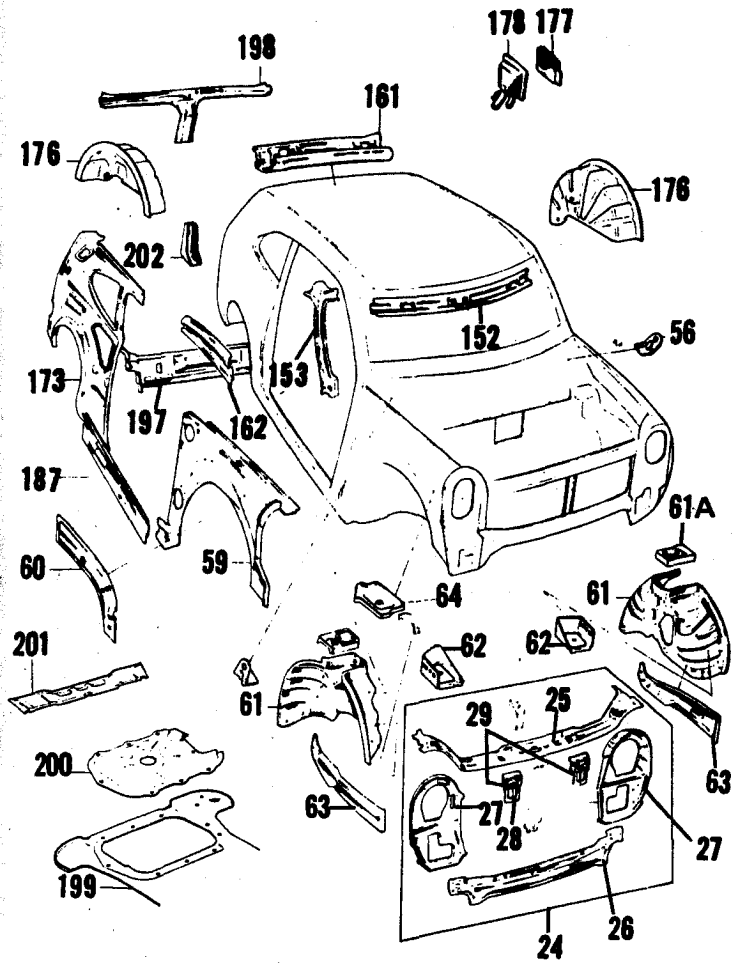


FIG G - SHEET METAL - INNER

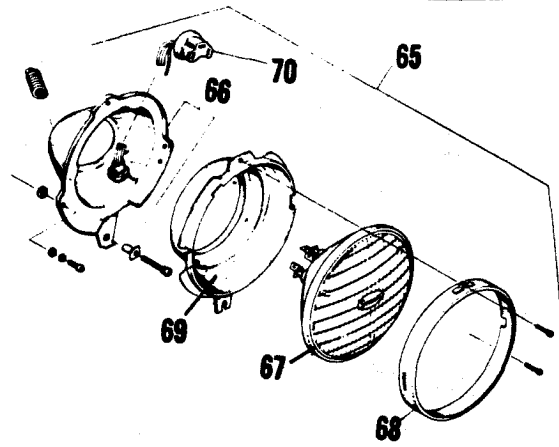


FIG I - HEADLAMP

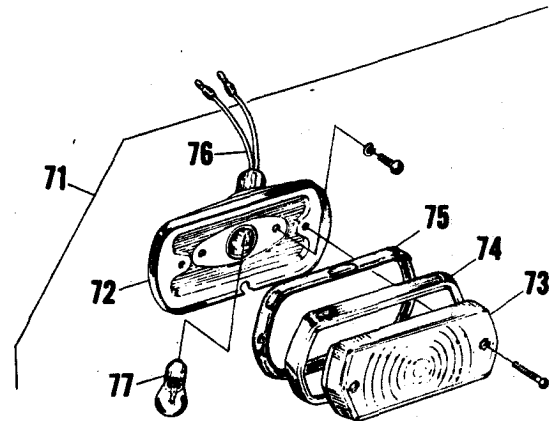


FIG J - PARKING & TURN SIGNAL LAMP

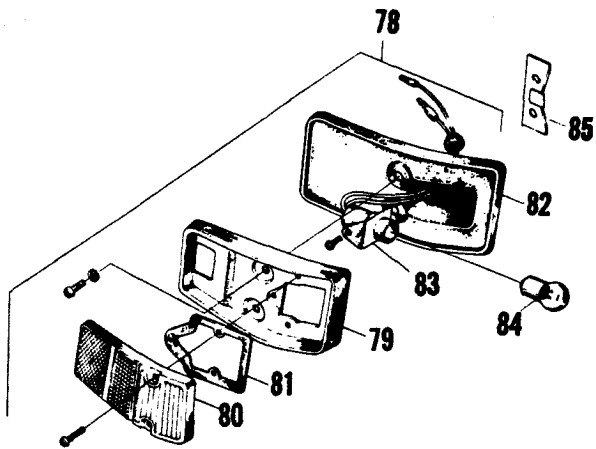


FIG K - SIDE LAMP - FRONT

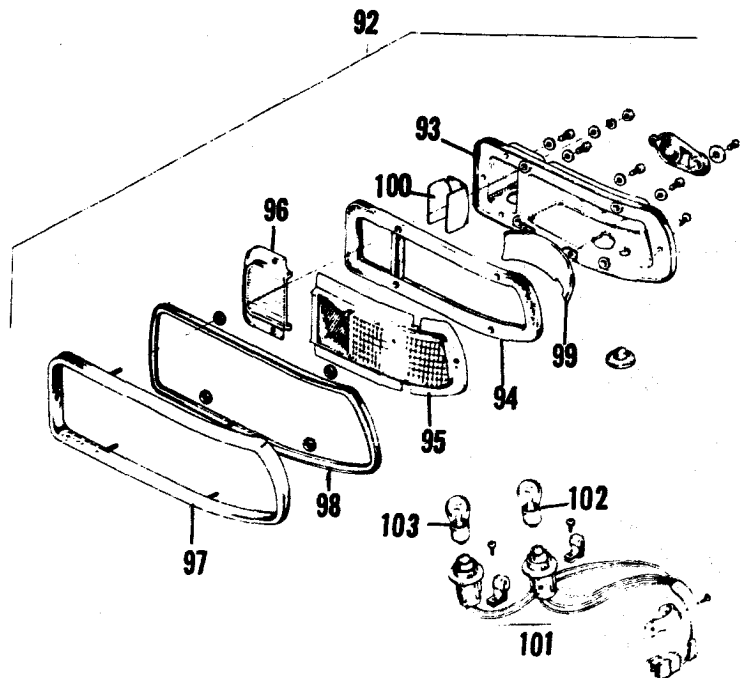


FIG M - TAIL & BACK-UP LAMP

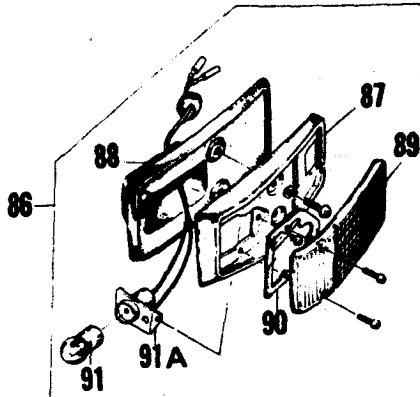


FIG L - SIDE LAMP - REAR

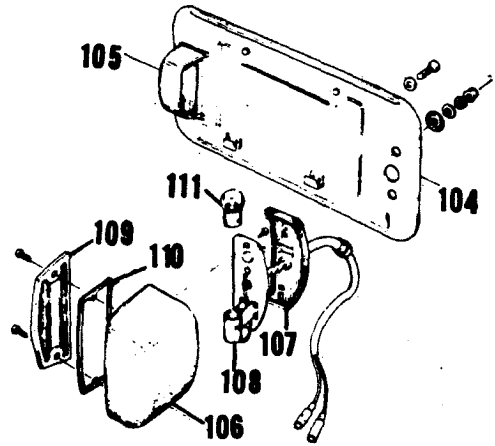


FIG N - LICENSE LAMP

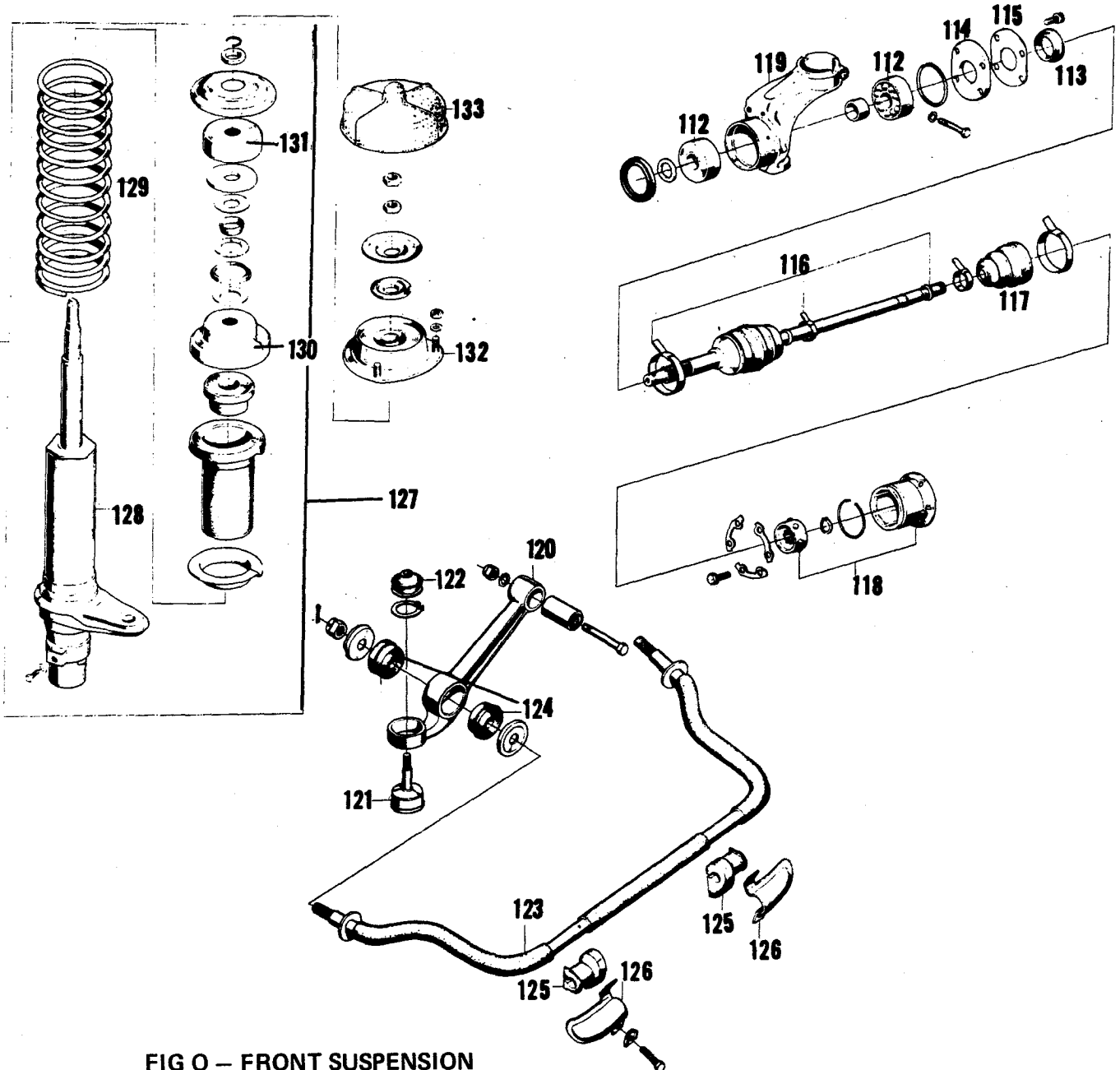


FIG O - FRONT SUSPENSION

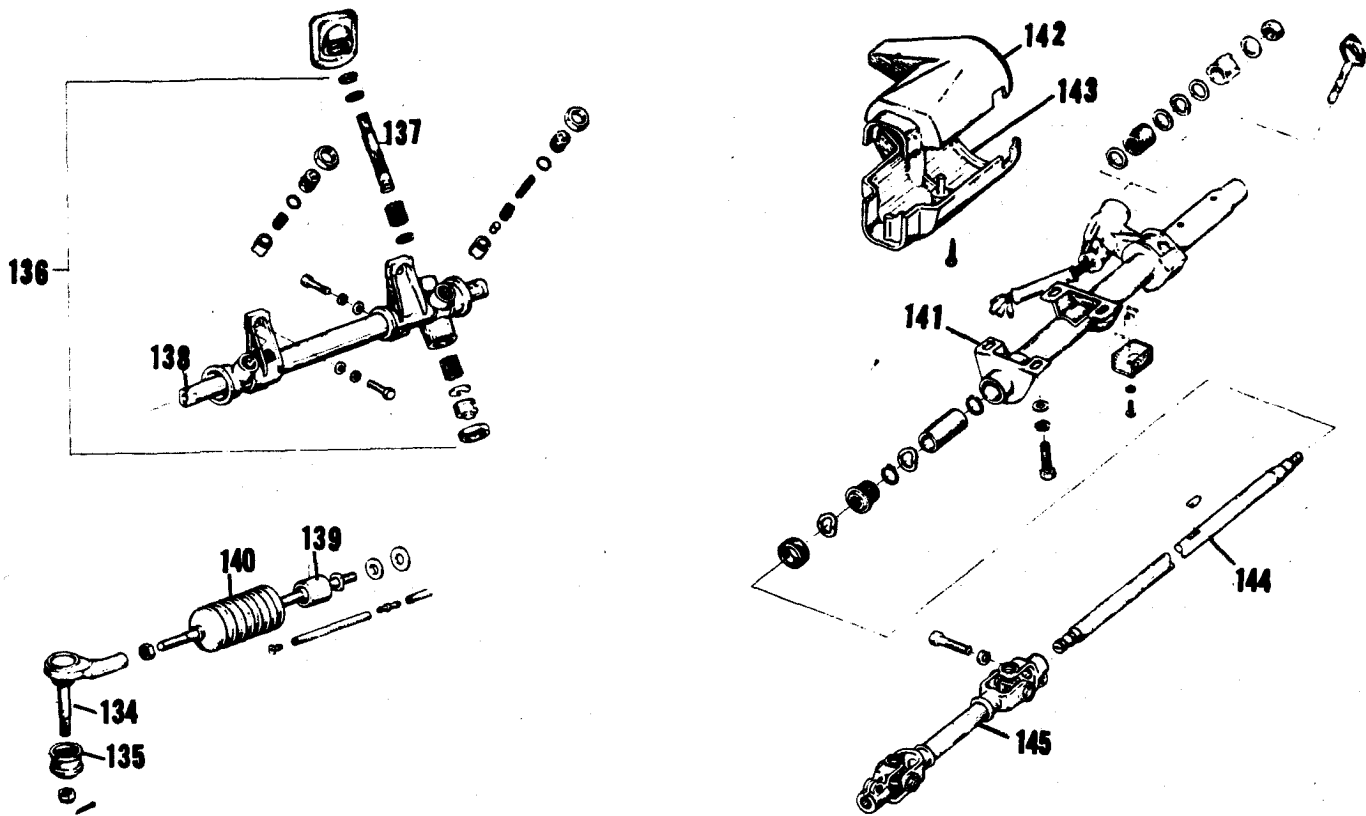


FIG P - STEERING