

# All this,



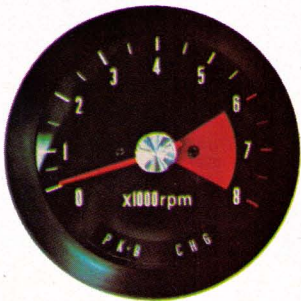
radial tires on mag-style wheels, standard



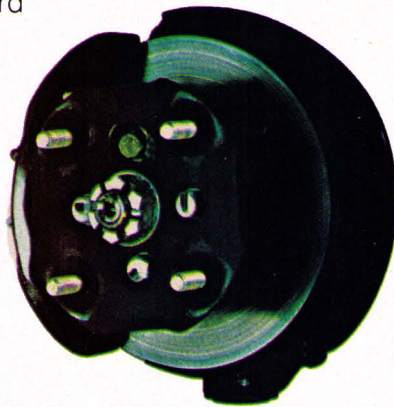
racing mirror, standard



front bucket seats, standard



tachometer, standard



power-assisted front disc brakes, standard



4-speed synchromesh transmission, standard



flip-up rear window, standard



roof light console, standard



rack and pinion steering, standard



# under one roof.



**The Honda Coupe. \$1735.\***  
It makes a lot of sense.

PHONE 800-243-6000 TOLL-FREE FOR THE NAME OF YOUR NEAREST HONDA AUTOMOBILE DEALER. (IN CONNECTICUT CALL 1-800-882-6500.) \*SUGGESTED RETAIL WEST COAST P.O.E. (\$40 HIGHER OTHER PORTS). DEALER PREPARATION, TRANSPORTATION, TAX AND LICENSE EXTRA. PRICE SUBJECT TO CHANGE WITHOUT NOTICE. ©1972 AMERICAN HONDA MOTOR CO., INC.